



Visit today and see how you can benefit from exchanging knowledge, sharing research methods, acquiring new skills and building partnerships with peers.

Find out more:  
[www.globalhealthlaboratories.org](http://www.globalhealthlaboratories.org)



## Welcome to Global Health Laboratories!

Welcome to the first Global Health Laboratories newsletter!

The Global Health Network, an online science park that hosts over 20 online communities for different health research groups and crosscutting health topics, is very pleased to continue to provide multiple resources for supporting health research.

As part of this ongoing commitment, The Network has recently launched Global Health Laboratories, a free, open-access, community based, online platform dedicated to support the advance of laboratory research in resource-constrained settings through the sharing of knowledge, methods and resources.

By enhancing networking and exchange between different types of laboratories, working in all types of settings and across disease areas, Global Health Laboratories seeks to enable equitable access to quality research resources, to promote good laboratory practice and, ultimately, to enable the advance of Laboratory research.

We hope that you enjoy the site and find the numerous free resources useful. There are now ninety guidance articles available on the site in addition to numerous downloadable laboratory SOPs and protocols, training materials (e-seminars and certificated e-learning courses) and career resources. We also provide expert input via Question & Answer topical discussions and a professional network for laboratory managers, researchers and staff to share experiences and seek peer support, advice and guidance.

We are always continuing to put up new tools and documents which we aim will help researchers. As more members join and contribute, the site will grow and evolve, becoming more useful and valuable. We always welcome feedback on all the articles, blogs, resources and comments so please do provide your input on the site!

Contact us on:

[laboratories@theglobalhealthnetwork.org](mailto:laboratories@theglobalhealthnetwork.org)

## New training presentations - Understanding the principles of GCLP

In the Training materials section of Global Health Laboratories you can find a range of Laboratory-related training resources available in the site and The Global Health Network, from e-Seminars to e-Learning courses, including some new Good Clinical Laboratory Practice (GCLP) Power Point training presentations. This set of Power Point presentations were kindly shared by the KEMRI-Wellcome Trust (Kilifi, Kenya) and are useful if you want to learn more about GCLP and the different aspects it involves or would like to get access to GCLP training materials.

Laboratories are a fundamental source of scientific evidence critical for clinical research and decision making in clinical diagnostics and patient care. Because of this, it is essential that laboratories meet quality and management standards so that the results they produce are unbiased, accurate

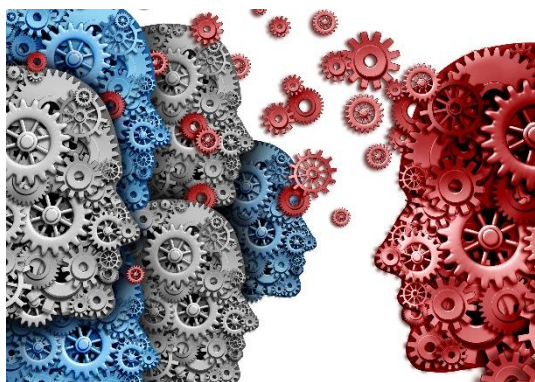
and complete. By combining the GLP and GCP sets of guidelines, GCLP ensures the quality and reliability of the clinical trial data generated by laboratories.

We hope you enjoy this new resource!

### SiteFinder

SiteFinder ([www.sitefinder.tghn.org](http://www.sitefinder.tghn.org)) is a free, novel approach to facilitating clinical research collaborations in low and middle-income countries. It enables investigators to find collaborators and helps groups that sponsor trials, such as universities, companies, and product development groups, to find trial sites. We are now pleased to share that we have 125 sites listed, and several studies have been posted up seeking collaborators.

## Announcing the all new Global Health Training Centre



The Global Health Network is pleased to announce the launch of its new research tool, the Global Health Training Centre!

The Centre brings together a wealth of research training materials, resources, e-seminars, e-

Learning courses, discussion forums, training opportunities and a Professional Membership Scheme to assist with the continued professional development needs of all those working in research across the world.

This platform is completely free, accessible to all and aims to provide research staff of all roles, all regions and all disease areas with the 'how-to' training materials required to safely conduct high quality research.

Within the Training Centre you can find courses in Laboratory-related topics such as Introduction to Reviewing Genomic Research and Basic Malaria Microscopy, with many more to come.

To access the Training Centre go to [www.globalhealthtrainingcentre.org](http://www.globalhealthtrainingcentre.org)

### Harnessing the digital sharing revolution to improve research capacity in African laboratories – panel seminar at the ASLM2014

To launch GlobalHealthLaboratories.org, the Global Health Network will hold a panel discussion at this year's African Society of Laboratory Medicine conference, ASLM2014. The panel discussion will be entitled "**Harnessing the digital sharing revolution to improve research capacity in African laboratories**" and will take place on **Tuesday 2<sup>nd</sup> of December from 18:30 to 20:00 at the Cape Town International Convention Center (CTICC).**

The seminar will include five talks in diverse areas surrounding this topic imparted by regional laboratory experts such as Sebastian Gelderbloem (Director of Aeras Global TB Vaccine Foundation in South Africa), followed by a discussion.

The aim of the panel seminar is to highlight the role of digital sharing in creating equity of access to research skills and enabling capacity building in Global Health research, as well as to explore the contribution the Global Health Network and Global Health Laboratories as key digital sharing initiatives. Content from the seminar will be posted on the website after the conference!



### GET INVOLVED

Global Health Laboratories is always on the lookout for researchers and laboratory staff who are keen to raise the profile of their work by writing blog articles or sharing their experiences through articles, or sharing resources they have built up. If you'd like to help, please do not hesitate to contact us. And lastly....

Global Health Laboratories is designed to be used by people like you, and we want the site and resources to be as functional and useful as they possibly can be.

If you have ideas for resources that you need but that we have not yet provided, or want to discuss your research, please don't hesitate to contact us or to make use of the discussion sections and blogs! We hope to hear from you soon!

The Global Health Laboratories team:  
[laboratories@theglobalhealthnetwork.org](mailto:laboratories@theglobalhealthnetwork.org)

Follow us on Twitter (@info\_TGHN) and on Facebook ([www.facebook.com/TheGlobalHealthNetwork](http://www.facebook.com/TheGlobalHealthNetwork)).